



This document explains how to install Visual Rules into an existing Eclipse 3.4 installation, using the update site.

### Proxy settings

If you access the internet via a proxy server, you have to configure your Eclipse proxy settings, so that installation via the Eclipse Update Site is possible.

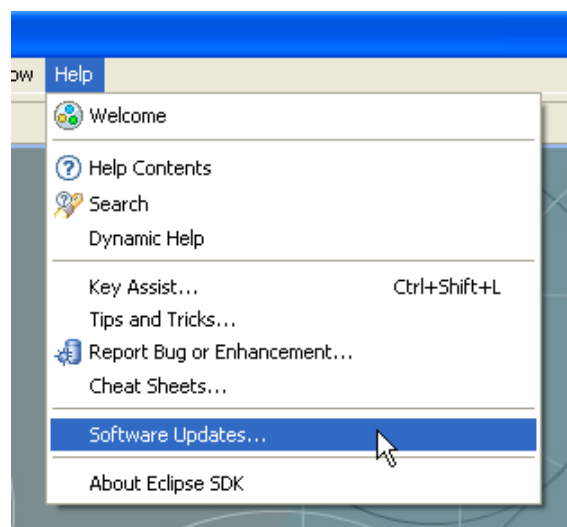
1. Select **Window > Preferences...** from the main menu.
2. Expand **General** on the left side. Select the page **Network Connections**.
3. Activate the option **Manual proxy configuration**.
4. Enter the appropriate name into the field **HTTP proxy**.
5. Enter the appropriate port number into the field **port**.
6. Click on **Apply**.
7. Click **OK**.

### Java 1.5 or higher

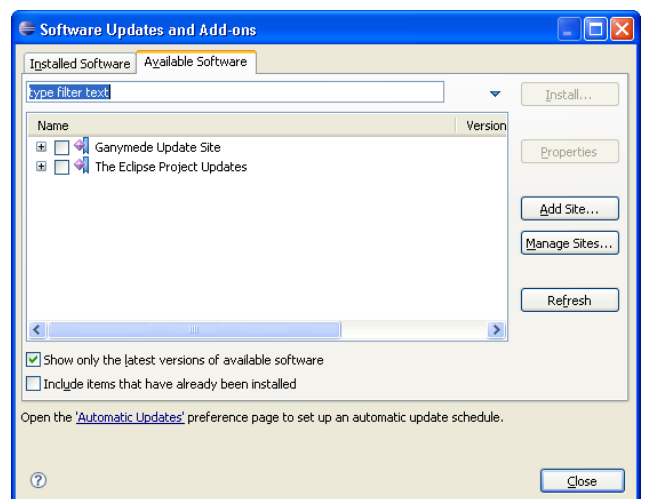
Visual Rules Modeler requires a Java 1.5 (or higher) to execute. Please make sure Eclipse 3.4 is running with a Java 1.5 (or higher) runtime before you install Visual Rules Modeler.

### Install Visual Rules

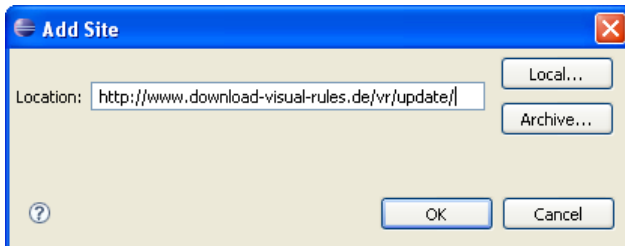
1. Select the **Help > Software Updates...** menu entry



- The **Software Updates and Add-ons** wizard appears.



2. Switch to the **Available Software** tab.
3. Click the **Add Site...** button to add the Visual Rules Update Site.
  - ▶ The Add Site dialog appears.



4. Enter the Visual Rules Update Site into the field **Location**.

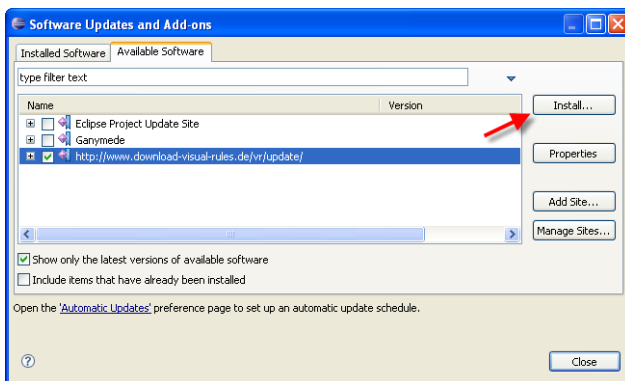
For Visual Rules 4:

<http://www.download-visual-rules.de/vr/update/>

For Visual Rules 5:

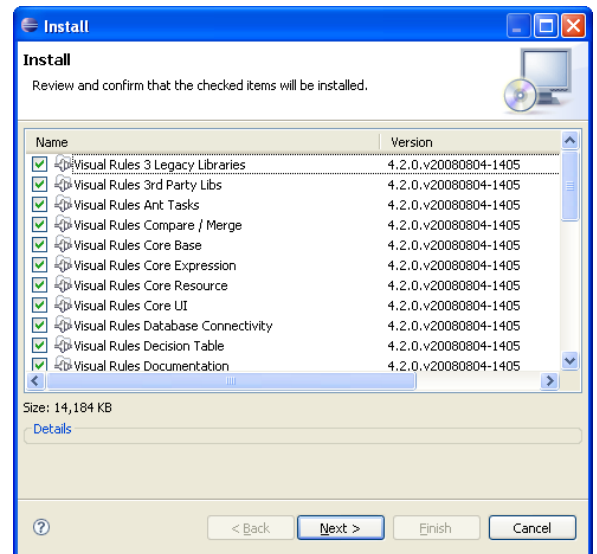
<http://www.download-visual-rules.de/vr5/update/>

5. Click **OK**.
  - ▶ The URL appears in the list **Available Software**.

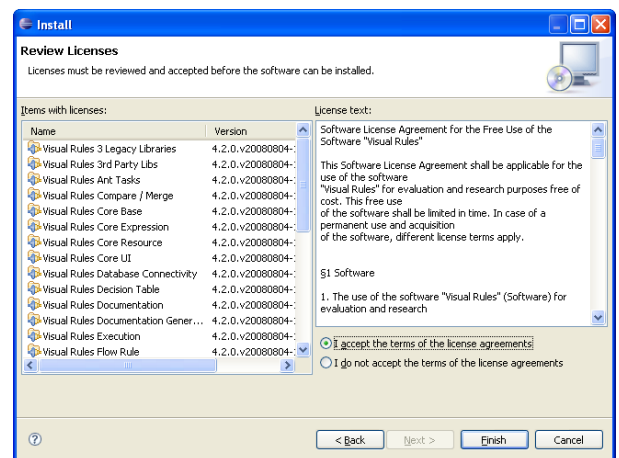


6. Select the Update Site and make sure that the entry is checked.
  - ▶ The **Install...** button is enabled.

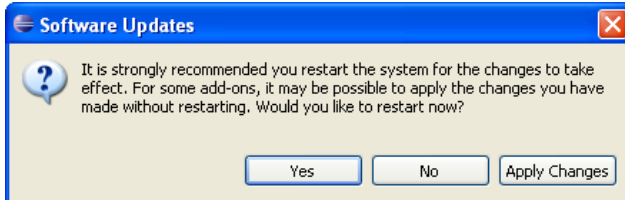
7. Click the **Install...** button.
  - ▶ Eclipse is now looking for new features at the selected update site. In the end, the features found are presented.



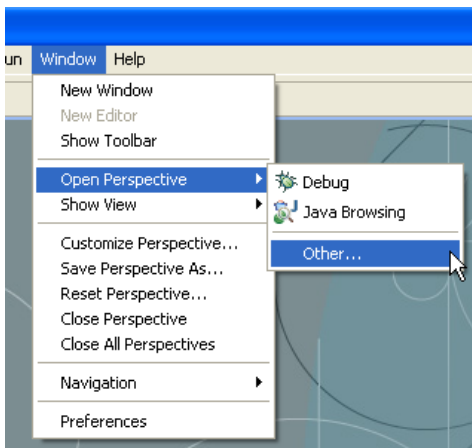
8. Click on **Next >**.
  - ▶ The license agreement appears.



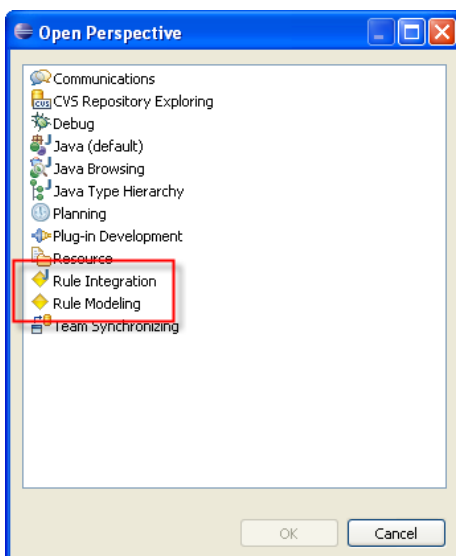
9. Read the license agreements carefully and select **"I accept the terms in the license agreements"**, if and only if you consent to the agreements and click on **Finish**.
  - ▶ The download and installation of the software starts.
  - ▶ At the end of the installation the dialog **Software Updates** appears to request the restart of Eclipse.



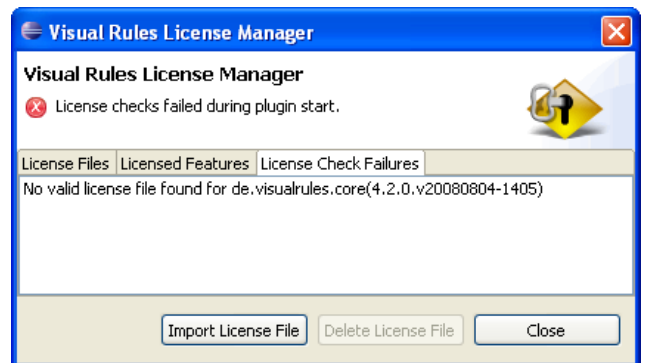
10. Confirm this dialog by clicking on **Yes**.
  - ▶ Eclipse restarts.
11. After the restart Visual Rules is installed. Open a Visual Rules perspective. Select the menu **"Window > Open Perspective > Other..."**.



- ▶ A selection dialog appears.



12. Select **Rule Integration** or **Rule Modeling**.
13. Confirm your selection by clicking **OK**.
  - ▶ The **Visual Rules License Manager** appears.
14. For the legal use of Visual Rules you have to import your license file. Save this file from our e-mail to your hard disk.



15. Click on **Import License File**
16. Select the license file on your disk and click on **Open**
17. The license setup is done. A dialog will prompt you to restart Visual Rules for the changes to take effect. Confirm with **Yes**.

**The installation is complete.**  
You are now able to work with **Visual Rules**.