



This document explains how to install Visual Rules into an existing Eclipse 3.6 installation using the update site.

### Proxy settings

If you access the internet via a proxy server, you have to configure your Eclipse proxy settings, so that installation via the Eclipse Update Site is possible.

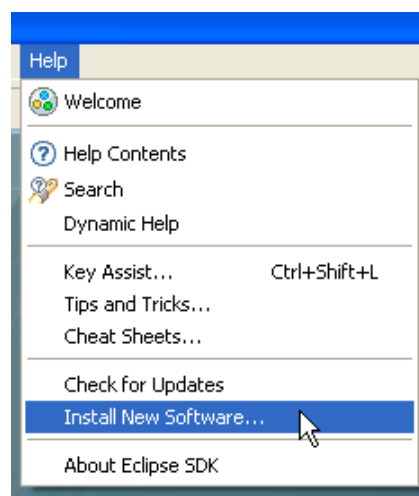
1. Select **Window > Preferences...** from the main menu.
2. Expand **General** on the left side.
3. Activate the page **Network Connections** and select **Manual** as **Active Provider**.
4. Select under **Proxy entries** the row with schema **HTTP** and click on **Edit...**
5. The dialog **Edit Proxy Entry** opens. Enter the appropriate name of the proxy server into the field **Host**.
6. Enter the appropriate port number into the field **Port** and confirm this dialog by clicking on **OK**.
7. Click on **Apply**.
8. Click **OK**.

### Java 1.5 or higher

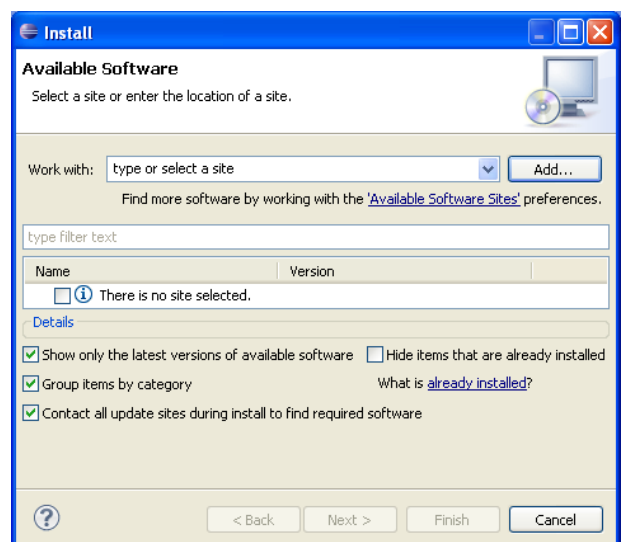
Visual Rules Modeler requires a Java 1.5 (or higher) to execute. Please make sure Eclipse 3.6 is running with a Java 1.5 (or higher) runtime before you install Visual Rules Modeler.

### Install Visual Rules

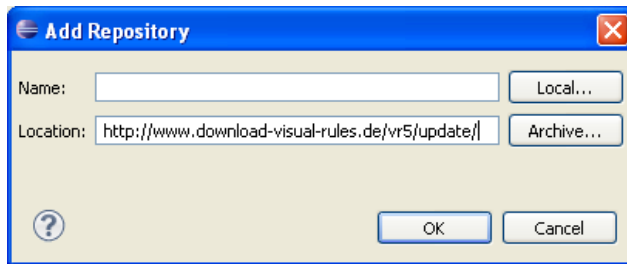
1. Select the **Help > Install New Software...** menu entry



- The **Install** wizard appears.



2. Click on **Add...** to add the Visual Rules Update Site.
- ▶ The **Add Repository** dialog appears.



3. Enter the Visual Rules Update Site into the field **Location**.

For Visual Rules 4:

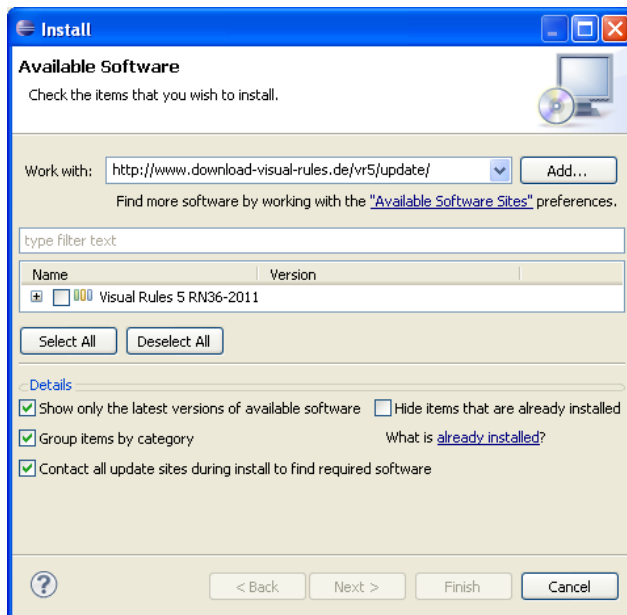
<http://www.download-visual-rules.de/vr/update/>

For Visual Rules 5:

<http://www.download-visual-rules.de/vr5/update/>

4. Click **OK**.

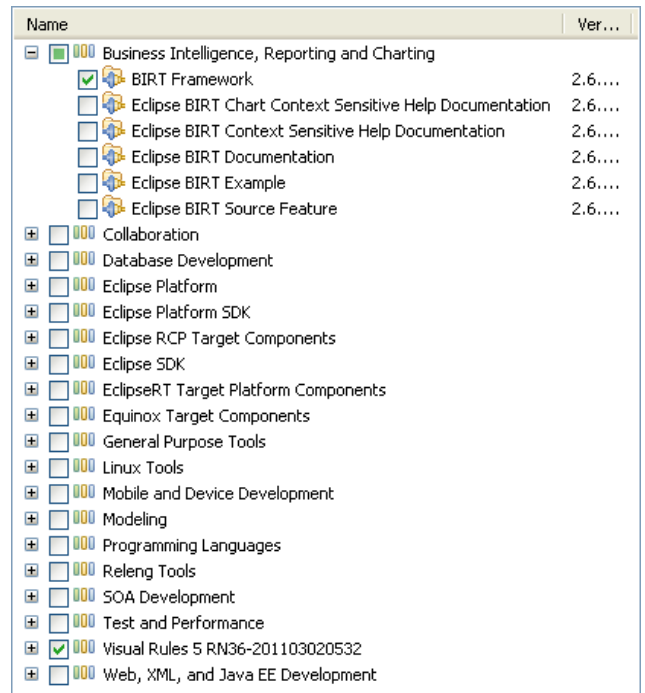
- ▶ Visual Rules appears as an **Available Software**.



5. Select under **Work with** the option **--All Available Sites--**.
- ▶ The **Available Software** list will be refreshed.

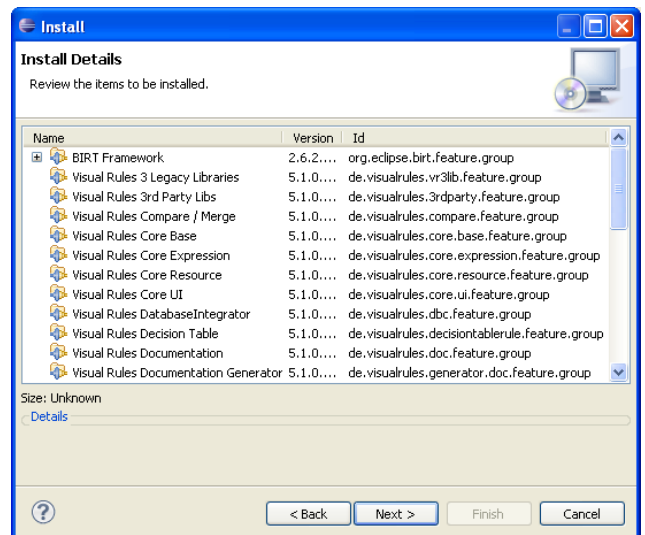
6. Select the **Visual Rules** Software and make sure that the entry is checked.

7. Expand the **Business Intelligence, Reporting and Charting Software** item and select **BIRT Framework**. Make sure that this entry is checked.

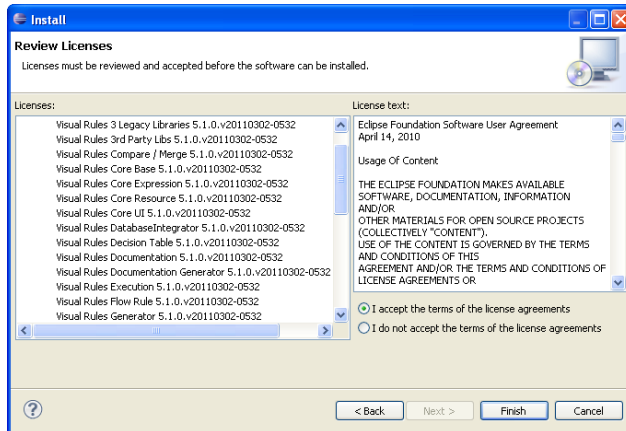


8. Click on **Next >**.

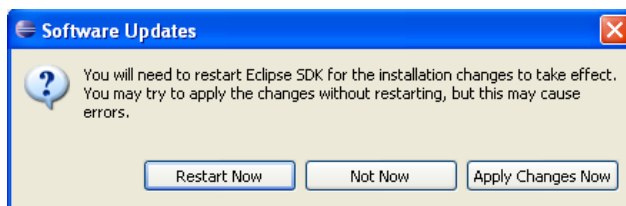
- ▶ Eclipse is now looking for new features of the selected components. In the end, the features found are presented.



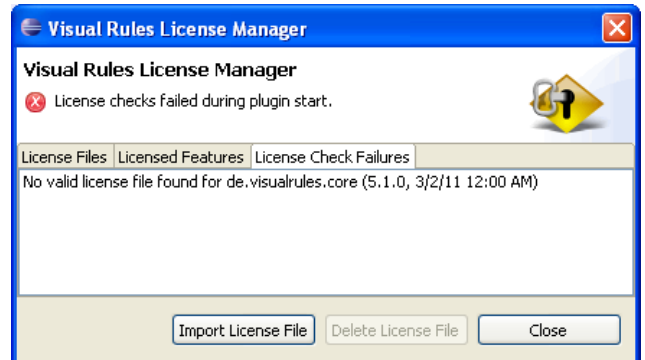
9. Click on **Next >**.
- ▶ The license agreement appears.



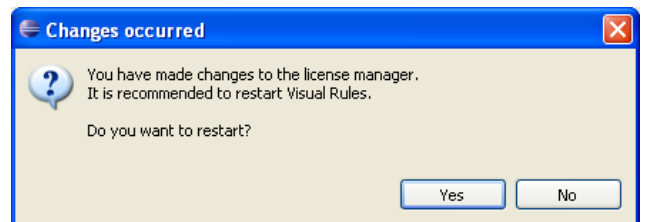
10. Read the license agreements carefully and select **“I accept the terms of the license agreements”**, if and only if you consent to the agreements and click on **Finish**.
- ▶ The download and installation of the software starts.
- ▶ At the end of the installation the dialog **Software Updates** appears to request the restart of Eclipse.



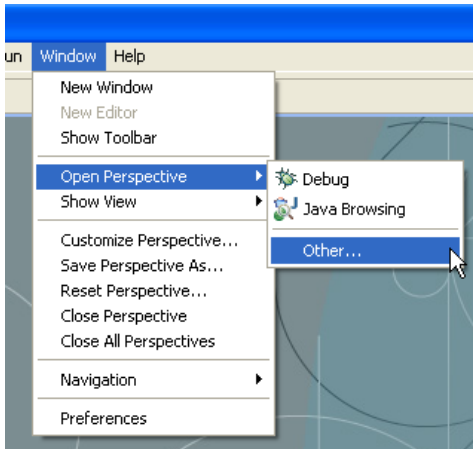
11. Confirm this dialog by clicking on **Restart Now**.
- ▶ Eclipse restarts.
- ▶ The dialog Visual Rules License Manager appears.



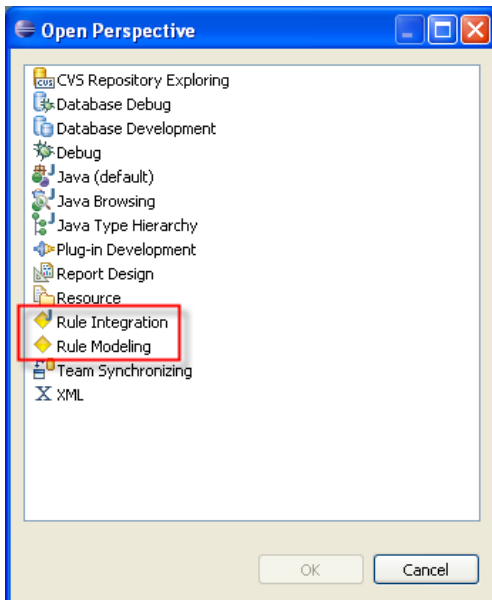
12. For the legal use of Visual Rules you have to import your license file. Save this file from our e-mail to your hard disk.
13. Click on **Import License File**.
14. Select the license file on your disk and click on **Open**.
15. The license setup is done. A dialog will prompt you to restart Visual Rules for the changes to take effect. Confirm with **Yes**.



16. After the restart of Visual Rules open a Visual Rules perspective selecting the menu entry “**Window > Open Perspective > Other...**”.



- The selection dialog **Open Perspective** appears.



17. Select **Rule Integration** or **Rule Modeling**.

18. Confirm your selection by clicking **OK**.

**The installation is complete.**

**You are now able to work with Visual Rules.**